

Vulcan Materials Corona Stone Safety Innovations 2019



Safe Access Ladder

- Used for entering and exiting 7' Symons Cone Crusher
- Previously employees would need to climb in and out of crusher
- Risk of slip, trip and fall hazards, as well as likelihood of strain from overextending body



Aluminum Cover Over Crusher Socket

Aluminum Cover Over Crusher Socket

- Previously used plywood to cover openings
- Plywood would tip to one side depending on body placement
- Aluminum cover provides snug fit, eliminating the risk of a tripping hazard if employee stands to one side
- Eliminated fall hazard
- Eliminated risk of splinters



Conveyor Crossover

- Access to crusher area previously required miners to travel to end of conveyor and back around, which is approximately 300 feet
- Crossover was erected to reduce this length to approximately 60 feet
- Resulted in reduction of risk of slips, trips and falls
- Reduction in time to complete tasks while working on crusher



Widened Transfer Point

- Transfer point was consistently becoming congested with material causing blockage
- Discharge portion of box was widened and lengthened
- Eliminated miners risk of having to enter transfer point, having to use hand tools to unplug which could cause pinch points
- Reduction in risk of ergonomic strain from prying material/tools



Knaack Box at Jaw Deck

- Eliminates the need for employees to transport heavy/bulky tools up and down the stairs
- Commonly stored tools include: porta power, 1" gun, impact gun, impact sockets, air hose, electrical extension cords, various sized bolts for jaw crusher



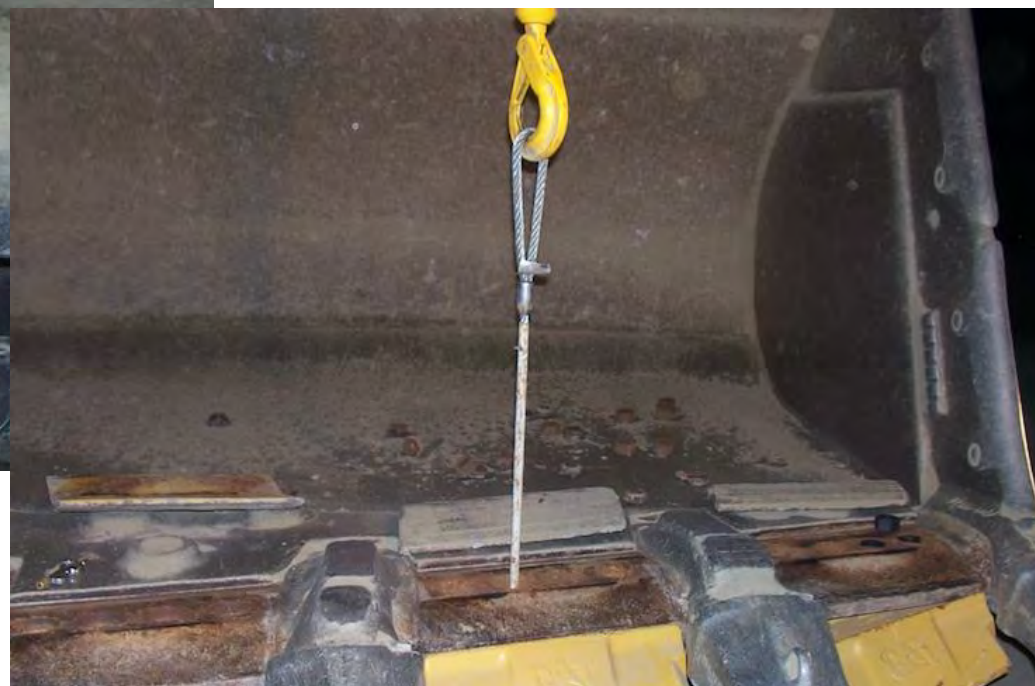
Rolling Tool Carts

- Provided in multiple areas of the plant for tool and parts storage while performing maintenance tasks
- Reduction of tripping hazard of having tools and parts on walkways
- Elimination of ergonomic hazards of bending over to pick up tools; brings items to accessible level



Composite Cribbing

- Used for cribbing heavy equipment
- Replaces old 8x8 and 12x12 wood cribbing which tended to crack, split, and soak up oil and grease, and were extremely heavy
- Composite does not absorb oil, and has a 50 year warranty
- Lock together so they do not slip out from one another
- Reduced risk of back or shoulder strain from trying to lift; elimination of line of fire hazard if cribbing slipped



Blade Lifter

- Replaced chain with single hook, had chances for pieces to become unsecured (line of fire)
- Eliminated pinch points when lifting
- Reduced the risk of strain from trying to secure equipment