

Spring Thaw 2018 CALCIMA

**California Construction and
Industrial Materials Association**

Ontario February 27 Sacramento March 13

Each enclosed presentation is copyrighted by the author of the presentation, and may not be used, re-used, or otherwise reproduced without the express written consent of that author. All rights reserved.

Plant Safety Innovations

CALCIMA Spring Thaw



GRANITE™

CALCIMA

California Construction and Industrial Materials Association



Best Practice Equipment

When equipment is all ready to go, mechanic marks the equipment.

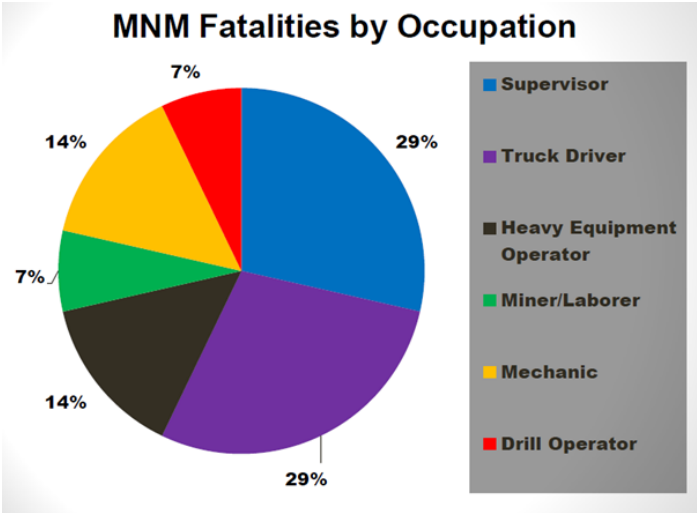


Best Practice

Grab the attention of your guests

A simple pie graph from MSHA grabs the attention of our guests. If you notice “Supervisors” and “Truck Drivers” are leading the fatalities by occupation.

Site specific stickers are bright and easily visible for guests to receive after getting site specific trained.



Capay Plant
MSHA ID# 04-05338

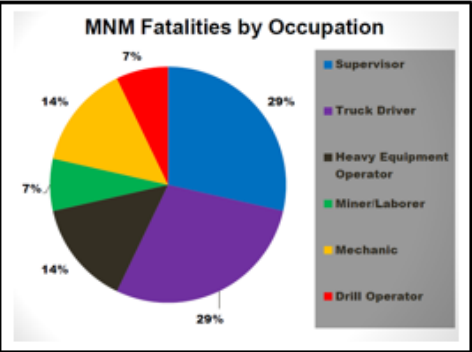
All persons on-site are required to follow Granite Policy, OSHA and MSHA regulations. Additionally, each contractor with employees working at this site must comply with 30 CFR Part 46.3 through 46.10 training of miners where applicable.

The Safety Policy, Safety Health Environmental and Quality Policy and Safety & Health Management System Documents are posted and available to all interested parties.

In the event of an EMERGENCY,
report to Granite Construction
personnel at the plant office or call:

Plant Foreman/Byron Dutton.....916-416-4858
Plant Superintendent/Dan Reiff.....916-768-2345
Plant Manager/Aaron Vasbinder.....209-603-3628
Safety/Buzz Biles.....916-709-8555
Safety/Jesse Torres.....916-539-9576
Environmental/Candice Longnecker.....408-840-6553

Report any and all accidents, incidents, or injuries;
ALSO report all oil, diesel, gas, or chemical spills to
plant supervisor immediately.



The following are **MANDATORY** guidelines to be followed when on-site. These have been established for your protection. **FAILURE TO COMPLY MAY RESULT IN REMOVAL FROM THE SITE.**

- 1. Personal Protection**
 - At the very least, hard hats, safety glasses with side shields, safety vests, and safety toed boots should be worn at all times, when on GCC property.
 - Hearing protection will be worn in designated areas.
 - Appropriate fall protection will be worn when a fall hazard exists.
 - Tunnels, conveyors, plant structures, stockpiles, high walls, storage tanks, and electrical components are strictly off limits when not accompanied by plant personnel; these may present unfamiliar and extremely dangerous hazards to you.
 - Eat and smoke only in designated areas.
 - Take note of first aid stations and fire extinguishers on the map.
- 2. Trucks/Equipment**
 - All plant mobile equipment has the right of way.
 - Eye contact will be made with any and all Granite operated equipment before entering their work area. Signal your intentions after eye contact is made and verify operator understood your signal.
 - Drivers and passengers will remain in their vehicle unless authorized by a plant official. Drivers will stay in their vehicle while being loaded. You will not be loaded if you are not in your truck.
 - Prior to moving mobile equipment or vehicles the driver must first sound the horn.
 - Parked, unattended vehicles will have parking break set, and when on a grade, are required to use chock blocks or turn wheels into a bank.
 - Obey all posted warning, traffic, and speed limit signs.
 - Use of cell phones are prohibited (Unless with a hands free system).
 - Use 3 points of contact when mounting/dismounting steps and ladders.
- 3. Contractors**
 - Contractor equipment must be in safe working condition before entering the site.
- 4. Hazard Recognition/Other**
 - Do not touch moving machinery. Cross conveyor belts only at designated crossing points. Do not climb over or under conveyors.
 - Never be under a suspended load.
 - All aspects of your job must be discussed with the plant supervisor.
 - Proper task training must be given before any job is done.
 - Always be on the lookout for rattlesnakes, and if you see one report it to the plant supervisor.
 - Be aware of heat illness, drink plenty of water.
 - No alcohol, illegal drugs or firearms are allowed of GCC property.
 - Follow fire watch procedures.

Name: _____ Date: _____

Signature: _____

Company: _____

Vending Machine Safety Station



Best Practice Electrical

- High visibility for safety underfoot
- Extra flexibility in cold weather
- Male plug has neon light to indicate power in cord and outlet
- Continuous Ground Monitoring (CGM) feature indicate there is a continuity in the ground wire. If there is no green light there has been a loss of ground continuity.

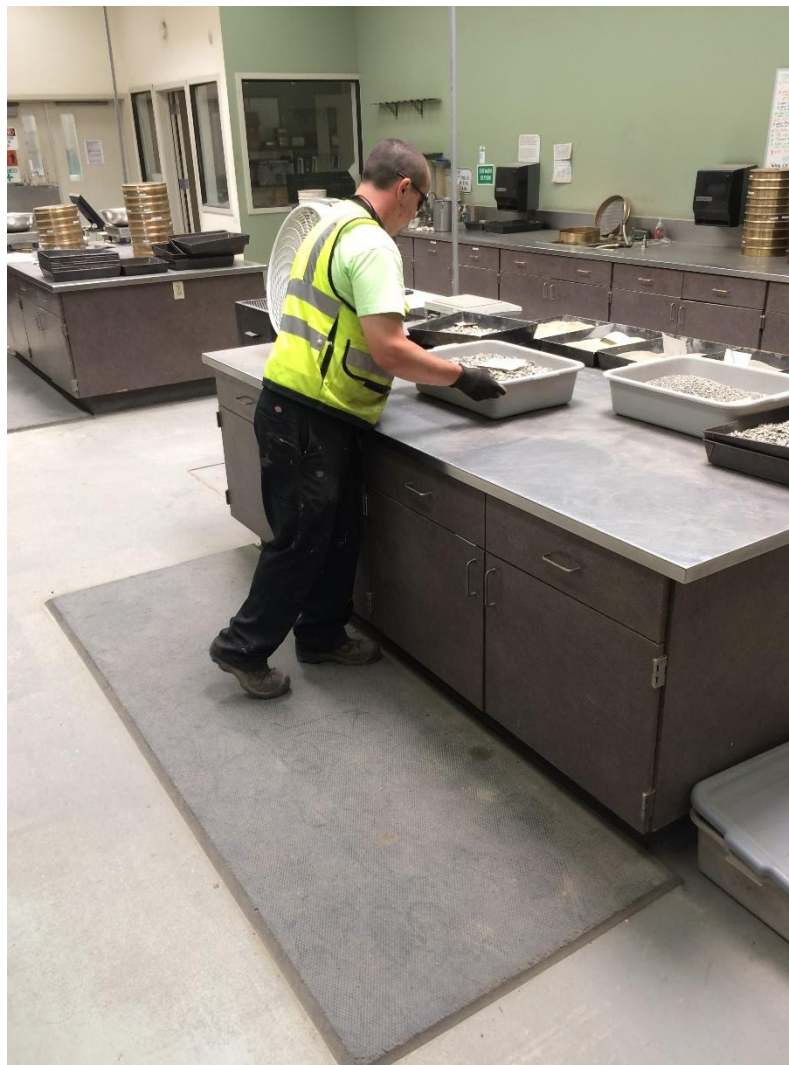
Link:

<http://www.milspecind.com/heavy-duty-extension-cords/pro-glo-triple-tap-extension-cords-with-cgm/>



Best Practice Lab

Ergonomic mats also known as ant fatigue mats can help make the working environment much more comfortable and easier on the feet.



LINK:

<https://www.grainger.com/category/antifatigue-mats/matting/safety/ecatalog/N-mzl?okey=ergonomic+mats&mkey=ergonomic+mats&refineSearchString=ergonomic+mats&NLSCM=14&EndecaKeyword=ergonomic+mats&searchRedirect=ergonomic+mats&suggestConfigId=6>

Best Practice Lab

Reduce how often you lift heavy material with this awesome table design.



Best Practice Lab

Evaluate the dusty areas within the lab. This hood and venting system has been added to control the dust and reduce the exposure.



Custom Hearing Protection

- Ensuring a good fit
- Allow you to still hear the non-harmful sounds such as back up alarms and verbal communication
- Shows your employees you care



https://superiorsoundtechnology.com/Hearing_Protection.html

Best Practice

Dust Control

Magnesium Chloride:

- Minimize dust on haul roads and plant area
- Reduces the need for multiple water trucks
- Conserves water
- Reduces fugitive dust for better air quality and public appearance



Best Practice

Railing vs. Fall Pro

Guardrails installed on screens so they can work on top of screen without using fall protection. Eliminate the hazard!!



Best Practice

Belt/flashing cutter

Utility knives can be dangerous, especially when cutting belts or doing splices. Using a cutter like these can help reduce your exposure and make your job easier.



Dremel Multi Max MM45

Belt Splice Video:

https://www.youtube.com/watch?v=LJKtDAZHpxk&feature=youtu_gdata_player

Patch Cut Video:

https://www.youtube.com/watch?v=4XZRJYpR77w&feature=youtu_gdata_player

Best Practice

Work Smarter not Harder

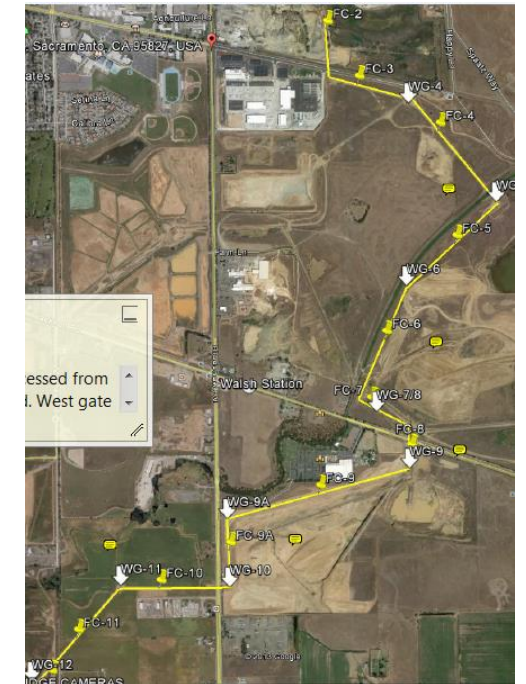
Instead of using a hammer to hit over and over again, speed up the process and get the right tool for the job. These help make the job easier, faster, and safer.



Best practice

Emergency Response with Fire Dept.

- Property Layout and Addresses
- Hot Plant Hazards
- Rock Plant Hazards
- Emergency Response Plan



Best Practice

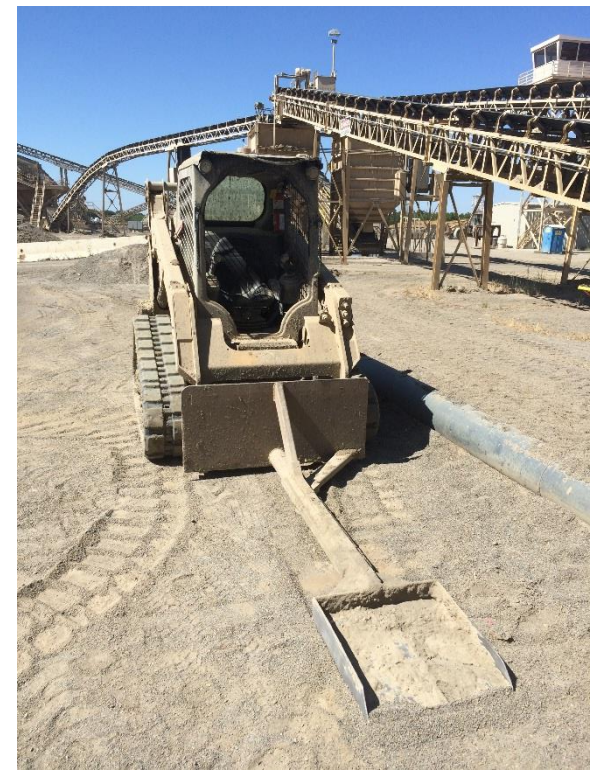
7 foot rule (.14107 (b))

Simple pipe hanging down by chain will help prevent any question at all about areas that may be a walkway under 7 foot.



Best Practice

- Cleans under hard to reach places
- Attaches to telehandler
- Bobcat scoops also



Belt Splice Made Easy

- Ensures a safe work platform
- Designed to be installed with a forklift
- The “scissor lift” design raises the belt with little effort with an impact gun
- Safer and easier



Best Practice Drainage

Where material is known to build up and water is known to sit, these cuts were made into the concrete slab to help drain. Works great!



Best Practice Walkways

Where material is known to be “Mucky” and mud is an issue, re-use old catwalks and use them as safe walkways.



Best Practice

Secure your tanks

This tank storage design allows you to individually get a tank not exposing the rest of them.



Best Practice

Stairs and Platforms vs. Ladders

Stairs and working platforms are much safer than ladders. Go through your plant and see what changes can be made to reduce the hazards.



Old Ladder
Process

Magnet that is
cleaned sometimes
daily.

New Stairs and
Platform Process

Best Practice

Everyday Parking

In areas that there are constantly trucks and equipment parking, consider installing fixed speed bumps or simply a ditch.



Best Practice

MCC Magnets for LO/TO and Confined Spaces

- Easily notifies employee of different hazards such as confined spaces.
- Reminds employees to fill out pre entry checklist for confined spaces
- Ensures all mandatory energy sources are Locked Out and Tagged Out.



Best Practice Unique Signage

Plant Entrance:

- 1) Your dog
- 2) Yourself
- 3) Your Friends
- 4) Your Kids
- 5) Work Safe For Them



Best Practice

Hot Oil Warning Sign

Signs were added to hot oil locations to grab your attention and remind employees how serious hot oil is.

Employee Was not wearing face shield or safety glasses at the time of injury. Employee was approximately 8-10' away from rupturing hose.

Injuries consisted of 1st and minor 2nd degree burns to face and neck.



ATTENTION:

Any person off loading oil at a Granite Utah Operations facility **MUST** wear the following Personal Protective Equipment:

- Face Shield
- Safety Glasses
- Hard Hat
- Long Sleeve Shirt or Nomex Arm Protectors
- Long Pants or Nomex Coveralls
- Gloves
- Work Boots

Anyone who fails to comply with these requirements will be escorted off the property immediately.

You will not be allowed to off load your truck and your company will be responsible for any associated expenses.



Traffic Control



Best Practice

Pre Fabricated Gates

- Cheap
- Easy to install
- Quick to install
- Heavy Duty
- Variety of sizes



Link:

[https://www.grainger.com/product/39L627?&cm_sp=Home-_-Products You Have Recently Viewed-_-AZHPRV 857-10693-2&cm_vc=AZHPRV 857-10693-2](https://www.grainger.com/product/39L627?&cm_sp=Home-_-Products+You+Have+Recently+Viewed-_-AZHPRV+857-10693-2&cm_vc=AZHPRV+857-10693-2)

Best Practice Crossovers

- Cheap
- Easy to assemble
- Durable
- Safe
- Toe kicks
- Compliant
- Deny access between transfer points



Best Practice

Screen Catwalks vs. Planks

- Sturdy
- Easy to Use
- Durable
- Better tool for the job



Questions?

Thank You!

Focus on the details!

